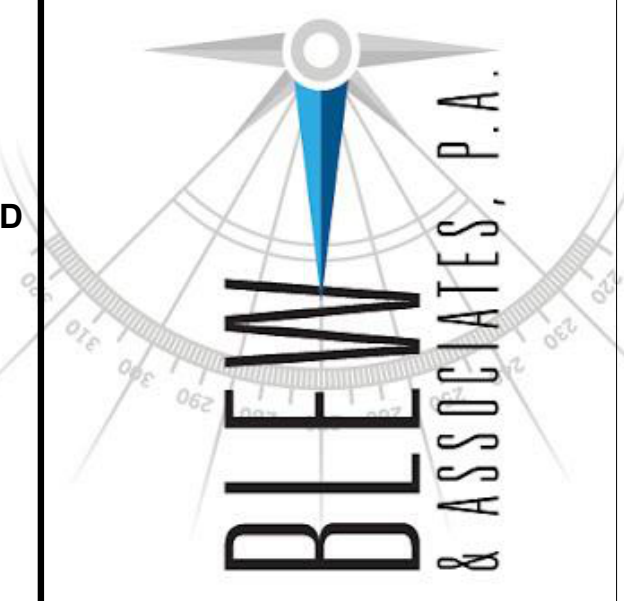


Surveying
Engineering
Mapping



**BLEW &
ASSOCIATES, PA**
CIVIL ENGINEERS
& LAND SURVEYORS
OFFICE: 479.443.4506
FAX: 479.582.1883
3825 N. SHILOH DRIVE
FAYETTEVILLE, ARKANSAS
72703
www.BLEWINC.com

DEMO

1234 Maple St., Jonestown, XX 12345

EXISTING CONDITIONS
THESE DOCUMENTS ARE A RECORD OF EXISTING
CONDITIONS FOUND ON THE DATE INDICATED AND
AT THE SITE INDICATED

DEMO

1234 Maple St., Jonestown, XX 12345

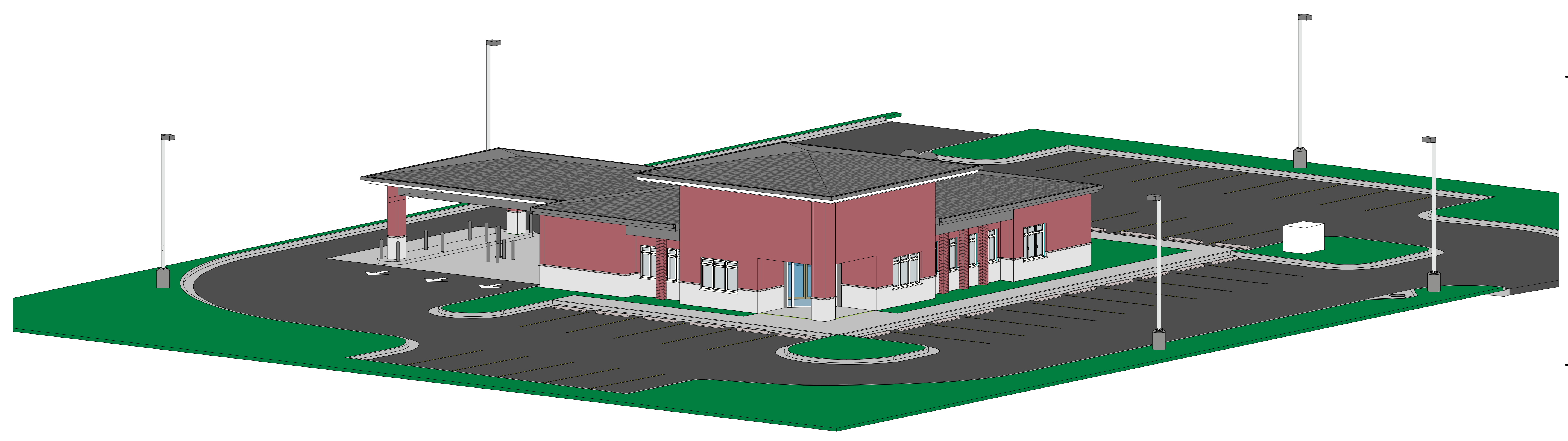
PROJECT # 12-3456

ISSUE BLOCK	#	DATE	DESCRIPTION

SHEET TITLE:

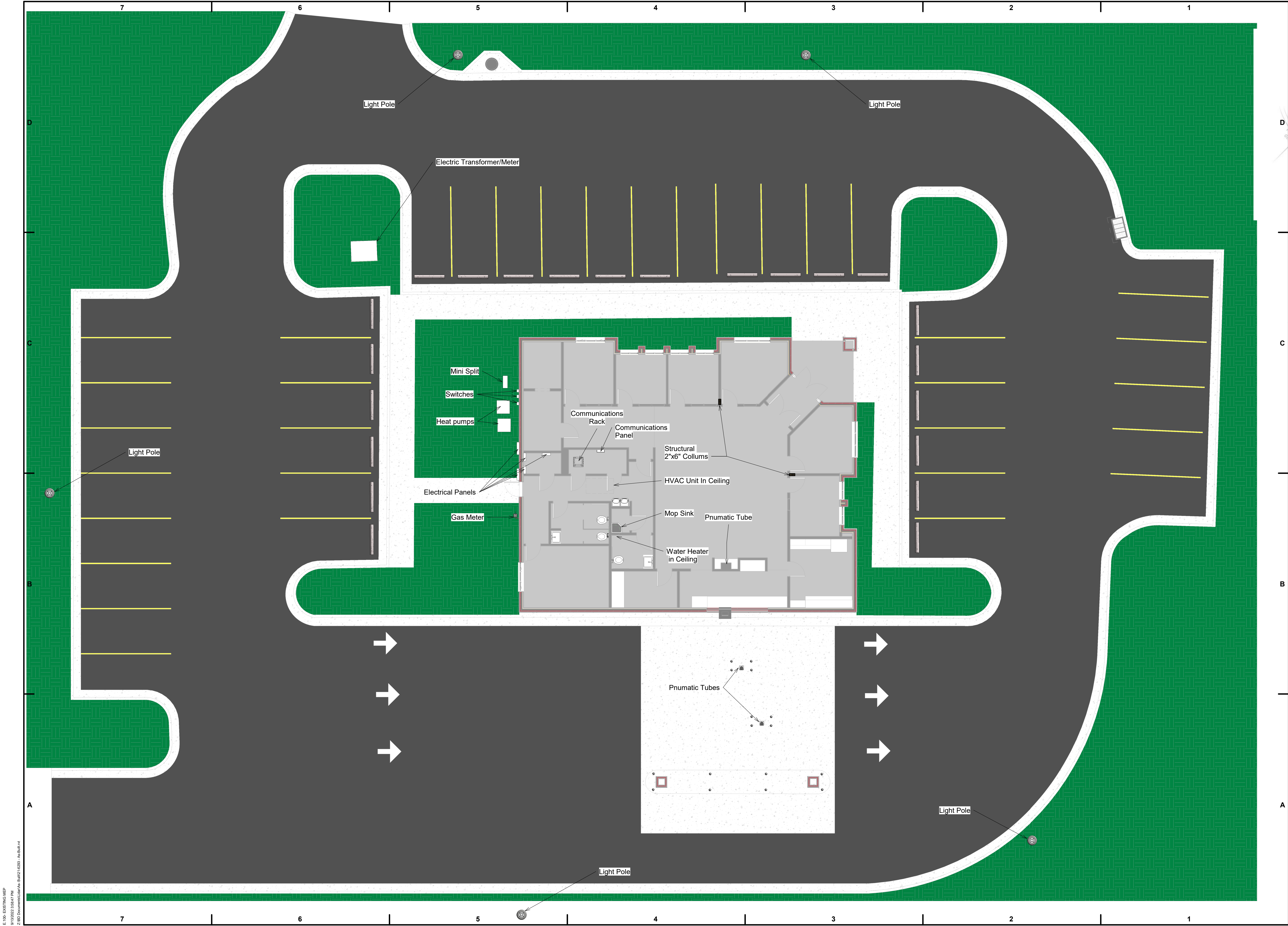
COVER

A.100



① 3D View 1

A.100 COVER
9/13/2012 3:58:45 PM
Z:\00 Documents\Bland\Bland\12345 - A.Bland.dwg



BLEW & ASSOCIATES, PA
 CIVIL ENGINEERS & LAND SURVEYORS
 OFFICE: 479.443.4506
 FAX: 479.582.1883
 3825 N. SHILOH DRIVE
 FAYETTEVILLE, ARKANSAS 72703
 www.BLEWINC.com

EXISTING CONDITIONS
 THESE DOCUMENTS ARE A RECORD OF EXISTING CONDITIONS FOUND ON THE DATE INDICATED AND AT THE SITE INDICATED

DEMO
 1234 Maple St., Jonestown, XX 12345

PROJECT # 12-3456

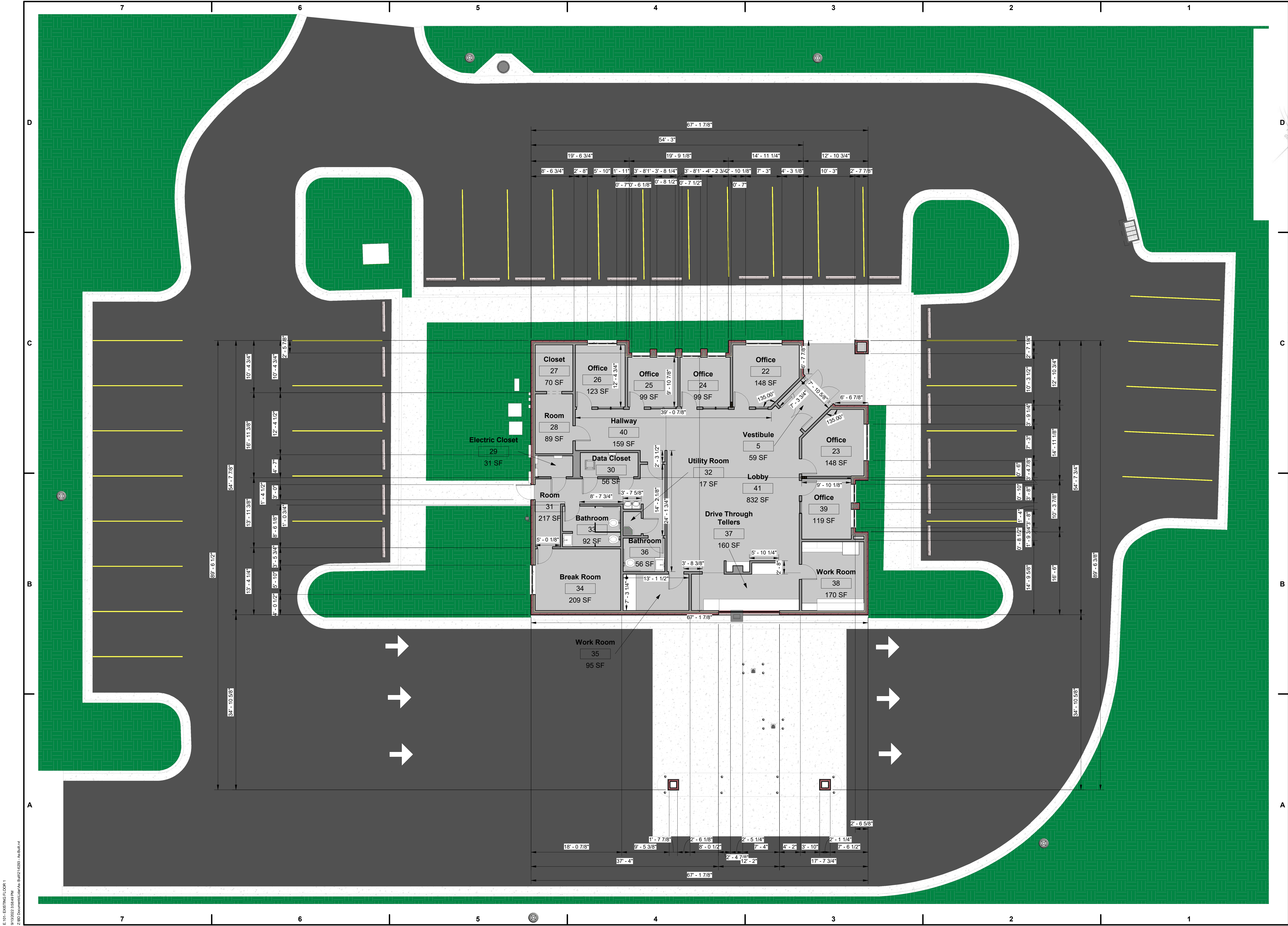
ISSUE BLOCK #	DATE	DESCRIPTION

SHEET TITLE:

EXISTING MEP

E.100

E.100 EXISTING MEP 9/13/2012 3:58:47 PM Z:\BID Documents\123456\123456.dwg - JAB:BLW



BLEW & ASSOCIATES, PA
 CIVIL ENGINEERS & LAND SURVEYORS
 OFFICE: 479.443.4506
 FAX: 479.582.1883
 3825 N. SHILOH DRIVE
 FAYETTEVILLE, ARKANSAS 72703
 www.BLEWINC.com

EXISTING CONDITIONS
 THESE DOCUMENTS ARE A RECORD OF EXISTING
 CONDITIONS FOUND ON THE DATE INDICATED AND
 AT THE SITE INDICATED

DEMO

1234 Maple St., Jonestown, XX 12345

PROJECT #: 12-3456

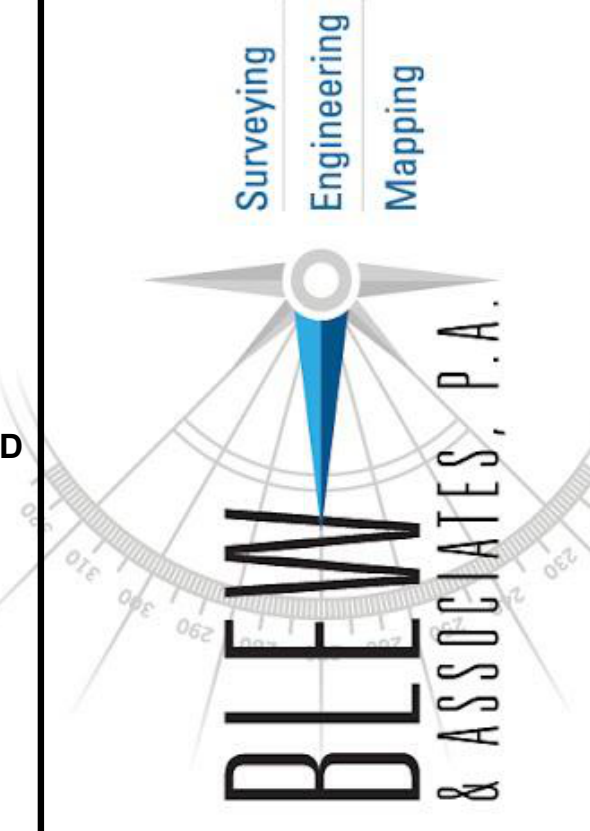
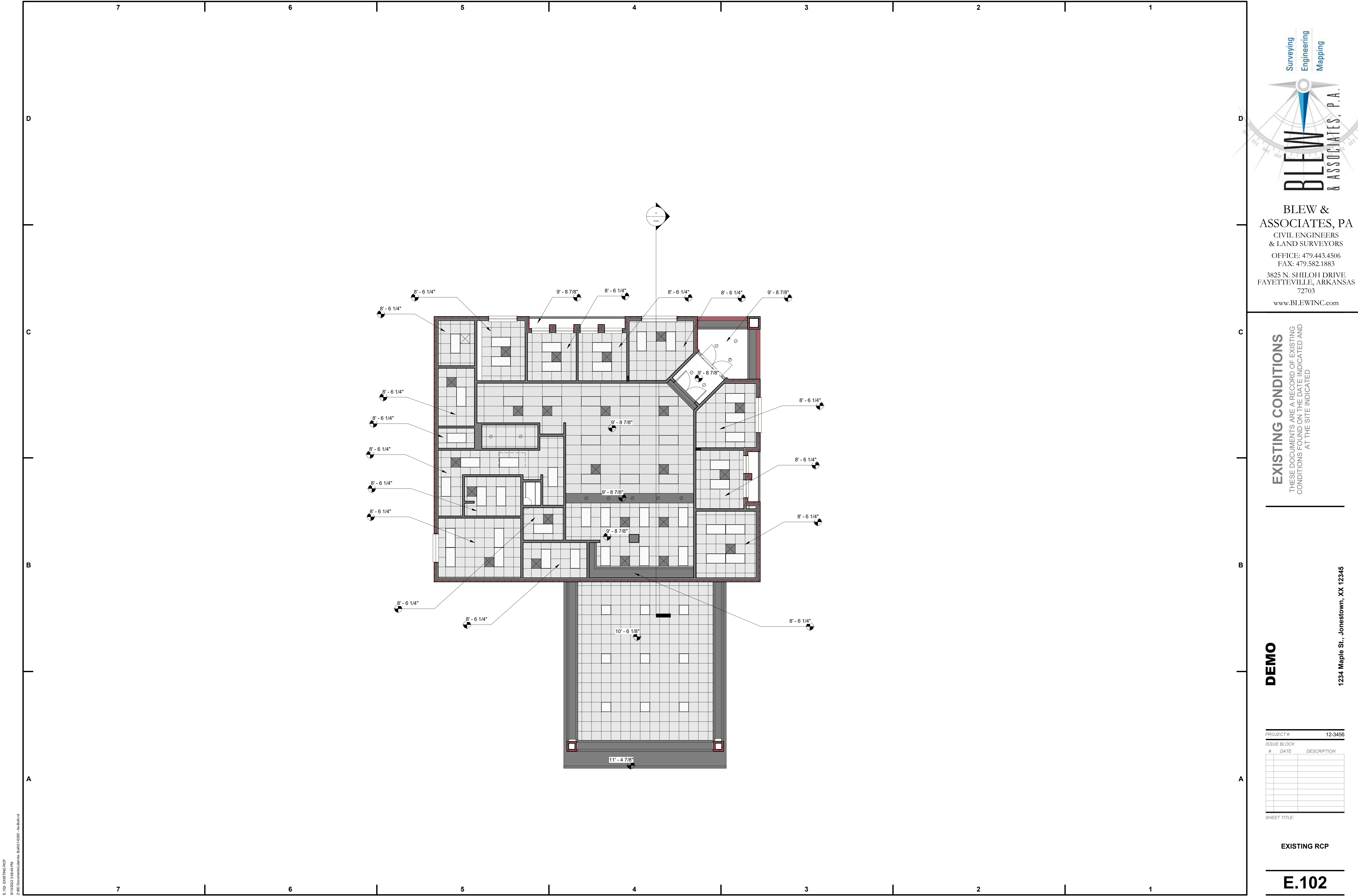
ISSUE BLOCK #	DATE	DESCRIPTION

SHEET TITLE:

EXISTING FLOOR 1

E.101

E.101 EXISTING FLOOR 1
 9/13/2022 2:58:48 PM
 Z:\BID Documents\Maple St. BLDG 12345 - A-Building



BLEW & ASSOCIATES, PA
 CIVIL ENGINEERS & LAND SURVEYORS
 OFFICE: 479.443.4506
 FAX: 479.582.1883
 3825 N. SHILOH DRIVE
 FAYETTEVILLE, ARKANSAS 72703
 www.BLEWINC.com

EXISTING CONDITIONS
 THESE DOCUMENTS ARE A RECORD OF EXISTING
 CONDITIONS FOUND ON THE DATE INDICATED AND
 AT THE SITE INDICATED

DEMO

1234 Maple St., Jonestown, XX 12345

PROJECT # 12-3456

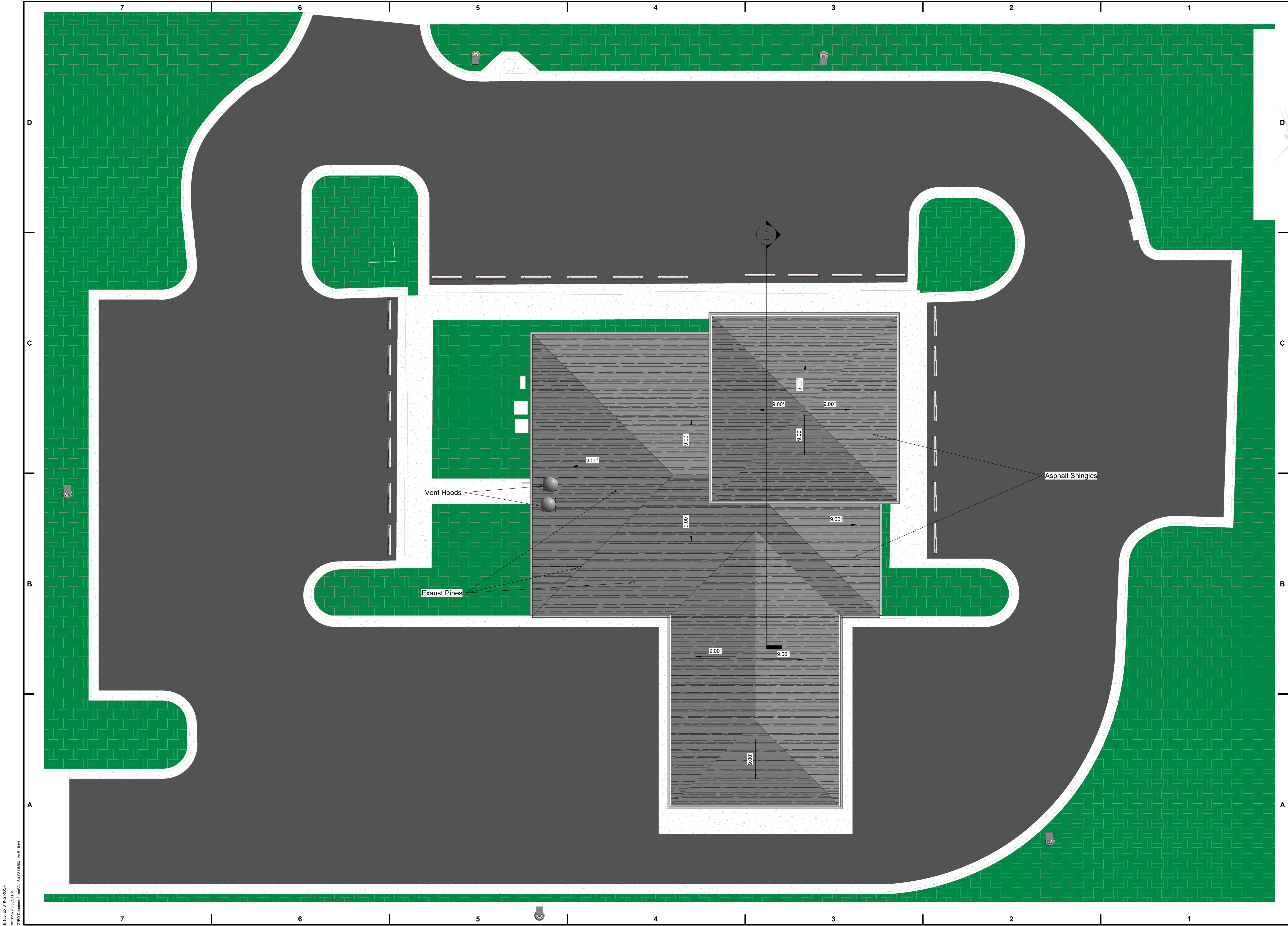
ISSUE BLOCK		
#	DATE	DESCRIPTION

SHEET TITLE:

EXISTING RCP

E.102

E:102 EXISTING RCP
 9/13/2012 2:58:48 PM
 Z:\00 Documents\AutoCAD\BMP12\0209 - JAB\BMP102



Surveying
Engineering
Mapping



BLEW & ASSOCIATES, PA
 CIVIL ENGINEERS
 & LAND SURVEYORS
 OFFICE: 479.443.4506
 FAX: 479.582.1883
 3825 N. SHILOH DRIVE
 FAYETTEVILLE, ARKANSAS
 72703
 www.BLEWINC.com

EXISTING CONDITIONS
 THESE DOCUMENTS ARE A RECORD OF EXISTING
 CONDITIONS FOUND ON THE DATE INDICATED AND
 AT THE SITE INDICATED

DEMO

1234 Maple St., Jonestown, XX 12345

PROJECT # 12-3456

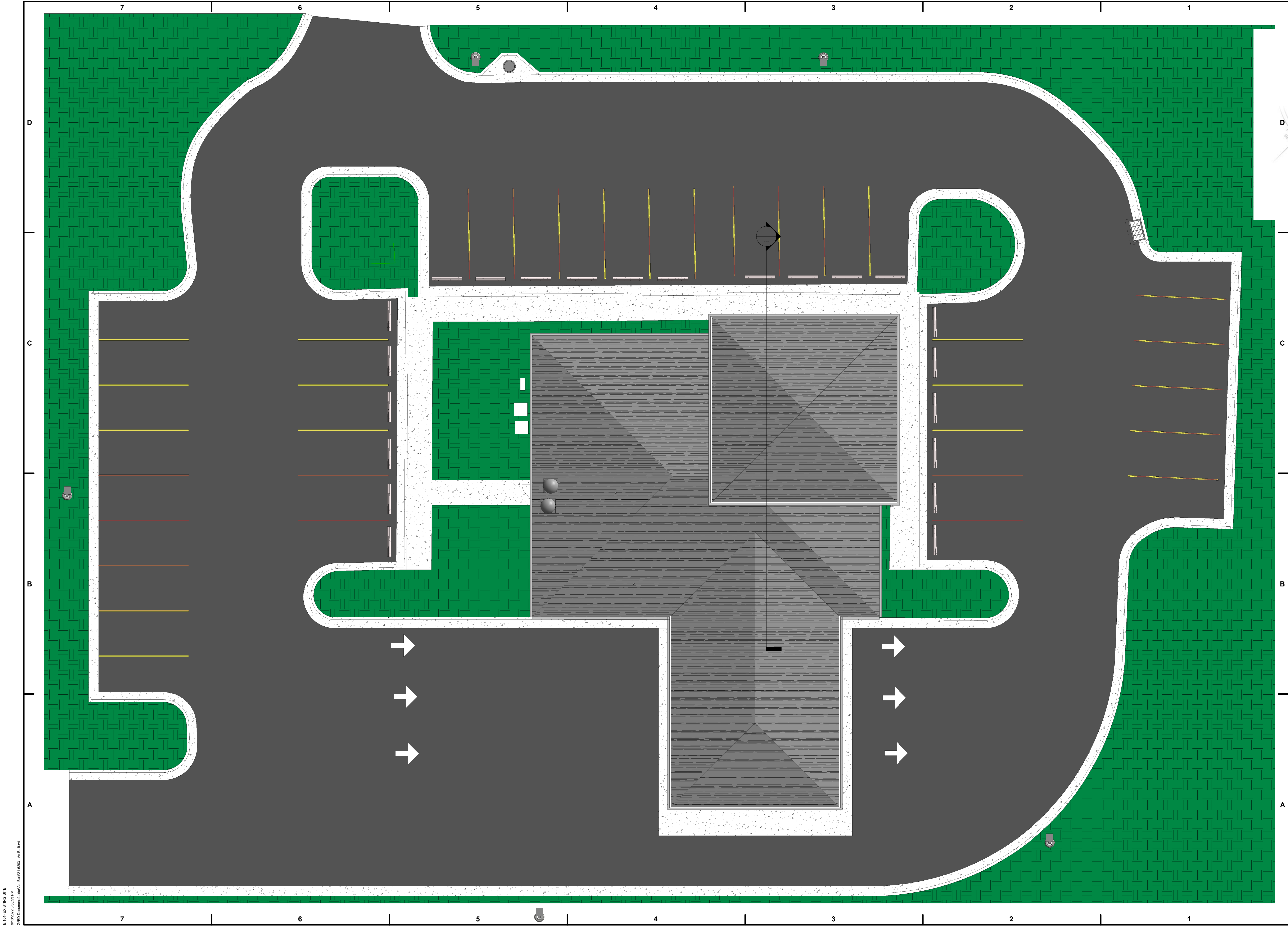
ISSUE BLOCK	#	DATE	DESCRIPTION

SHEET TITLE:

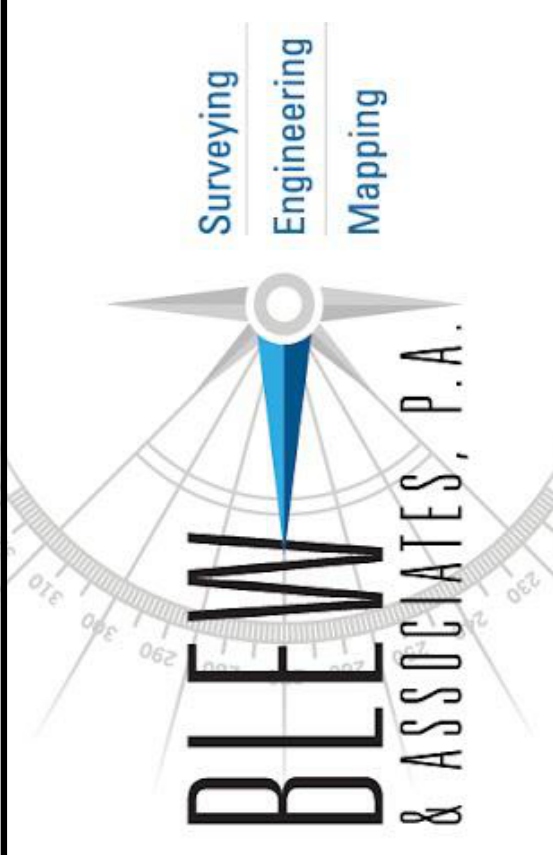
EXISTING ROOF

E.103

E.103 - EXISTING ROOF
 9/13/2012 2:58:51 PM
 Z:\00 Documents\Blewin\Blewin\Blewin\Blewin.dwg



E:104 EXISTING SITE
 9/13/2022 2:58:53 PM
 Z:\BID Documents\123456\123456.dwg - JAB\BLOT



BLEW & ASSOCIATES, PA
 CIVIL ENGINEERS
 & LAND SURVEYORS
 OFFICE: 479.443.4506
 FAX: 479.582.1883
 3825 N. SHILOH DRIVE
 FAYETTEVILLE, ARKANSAS
 72703
 www.BLEWINC.com

EXISTING CONDITIONS
 THESE DOCUMENTS ARE A RECORD OF EXISTING
 CONDITIONS FOUND ON THE DATE INDICATED AND
 AT THE SITE INDICATED

DEMO

1234 Maple St., Jonestown, XX 12345

PROJECT # 12-3456

ISSUE BLOCK #	DATE	DESCRIPTION

SHEET TITLE:

EXISTING SITE

E.104