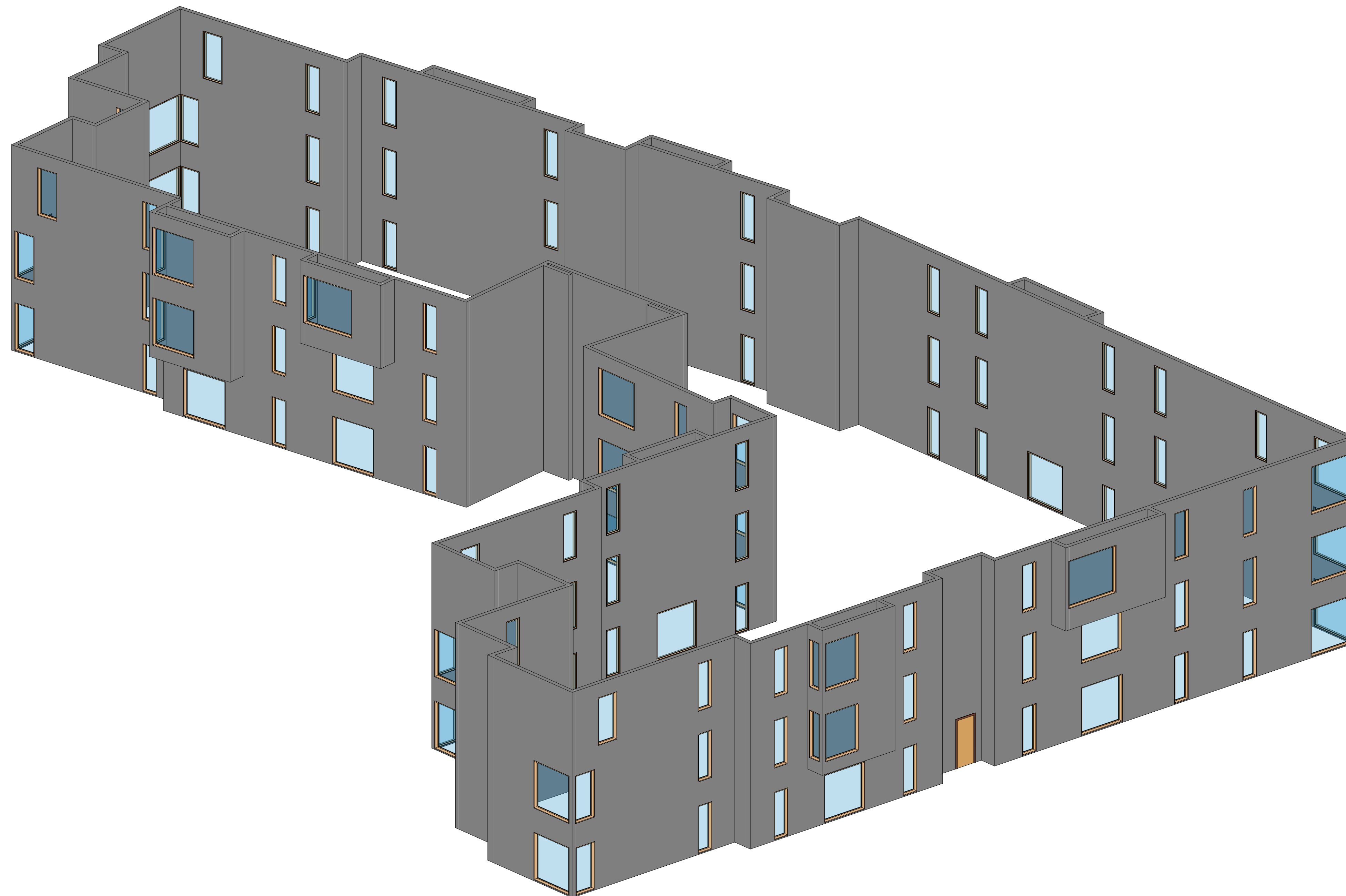
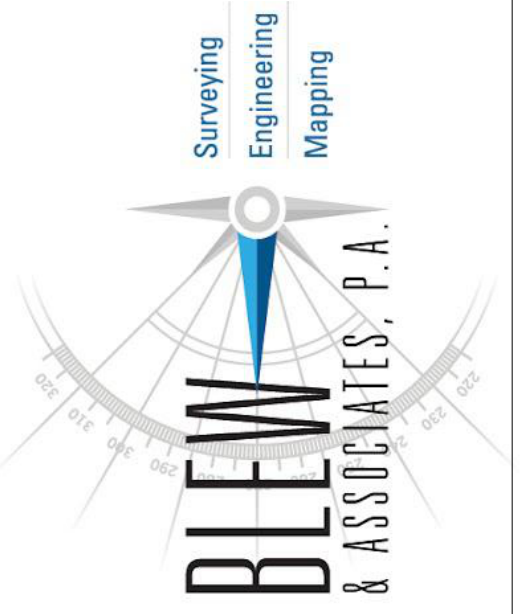


# Demo - Window Alignment Verification

## Building 1



INDEX	
Sheet Name	Sheet Number
Cover	C1
Level 1 - Floorplan	L1
Level 2 - Floorplan	L2
Level 3 - Floorplan	L3
Sheet 1	S101
Sheet 2	S102
Sheet 3	S103
Sheet 4	S104
Sheet 5	S105
Sheet 6	S106



BLEW &  
ASSOCIATES, PA  
CIVIL ENGINEERS  
& LAND SURVEYORS  
OFFICE: 479.443.4506  
FAX: 479.582.1883  
3825 N. SHILOH DRIVE  
FAYETTEVILLE, ARKANSAS  
72703  
www.BLEWINC.com

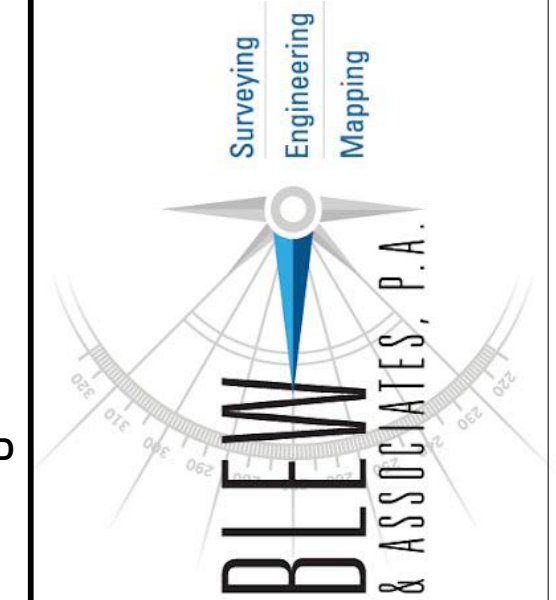
**EXISTING CONDITIONS**  
THESE DOCUMENTS ARE A RECORD OF EXISTING  
CONDITIONS FOUND ON THE DATE INDICATED AND  
AT THE SITE INDICATED

### Building 1

PROJECT #		23-XXXX
ISSUE BLOCK		
#	DATE	DESCRIPTION
1	1/28/2023	Field Work Complete
2	1/31/2023	Preliminary Submitted

SHEET TITLE:  
**Cover**  
**C1**

C1-Cover  
1/31/2023 1:36:16 PM  
C:\Users\blewin\OneDrive\Documents\2023\23-XXXX\Building 1.dwg



BLEW &  
ASSOCIATES, PA  
CIVIL ENGINEERS  
& LAND SURVEYORS  
OFFICE: 479.443.4506  
FAX: 479.582.1883  
3825 N. SHILOH DRIVE  
FAYETTEVILLE, ARKANSAS  
72703  
www.BLEWINC.com

**EXISTING CONDITIONS**  
THESE DOCUMENTS ARE A RECORD OF EXISTING  
CONDITIONS FOUND ON THE DATE INDICATED AND  
AT THE SITE INDICATED

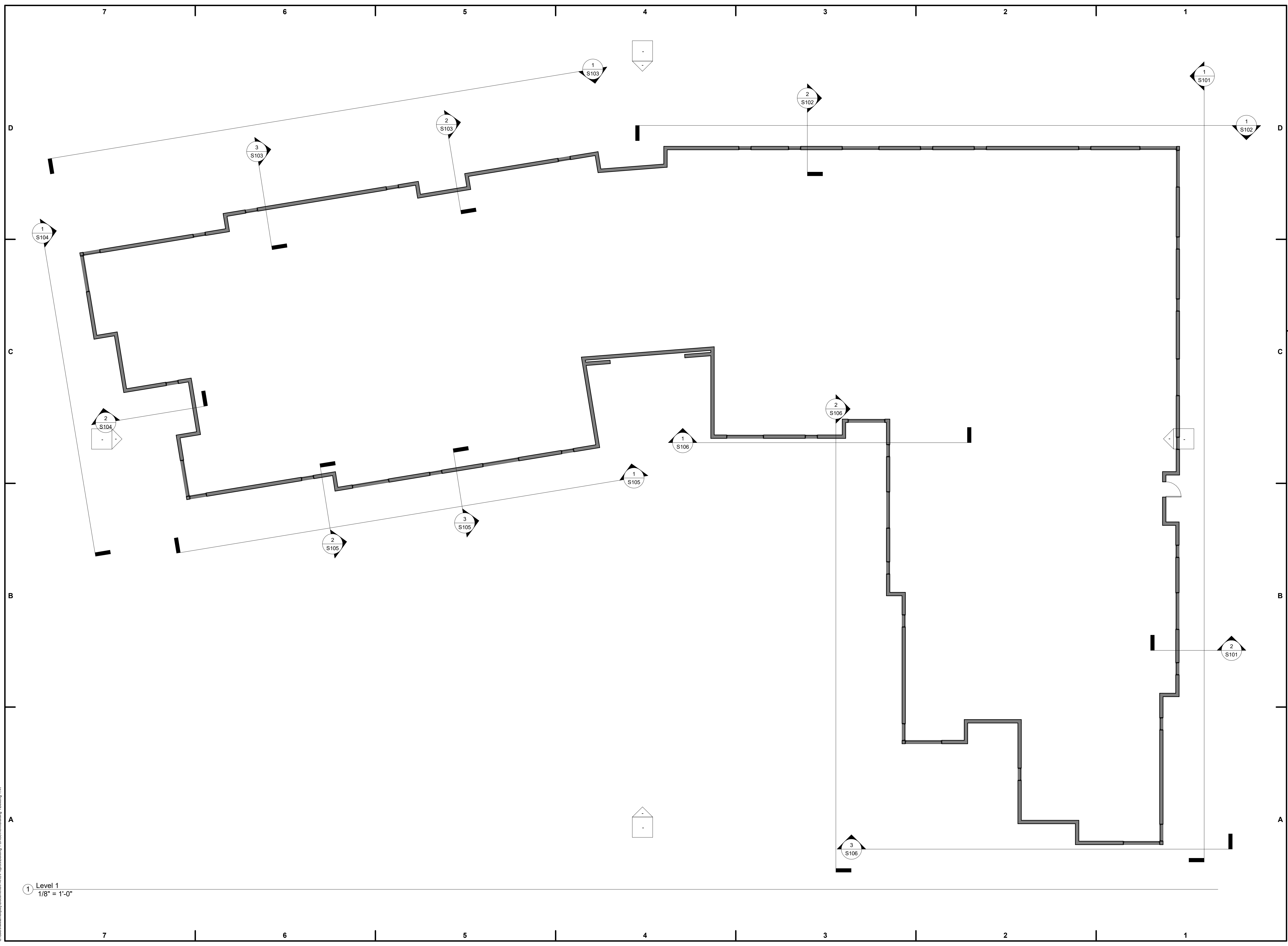
**Building 1**

PROJECT #:	23-XXXX	
ISSUE BLOCK		
#	DATE	DESCRIPTION
1	1/28/2023	Field Work Complete
2	1/31/2023	Preliminary Submitted

SHEET TITLE:

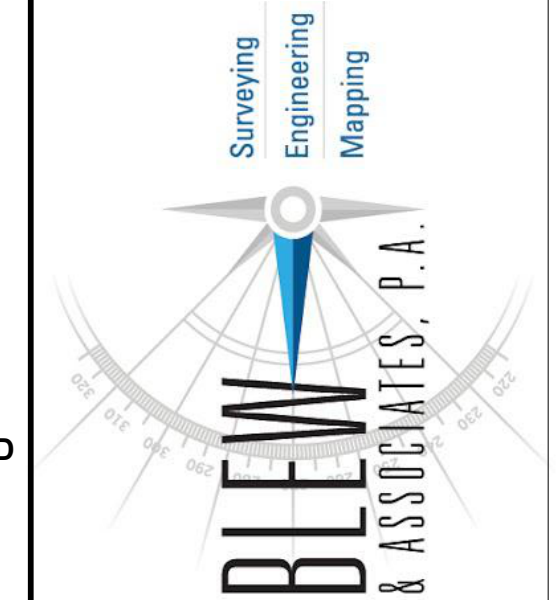
Level 1 - Floorplan

**L1**



1 Level 1  
1/8" = 1'-0"

L1 Level 1 - Floorplan  
 1/31/2023 1:38:17 PM  
 C:\Users\blewin\OneDrive\Documents\2023\23-XXXX\Building 1 - L1 Level 1 - Floorplan.dwg



BLEW & ASSOCIATES, PA  
 CIVIL ENGINEERS & LAND SURVEYORS  
 OFFICE: 479.443.4506  
 FAX: 479.582.1883  
 3825 N. SHILOH DRIVE  
 FAYETTEVILLE, ARKANSAS 72703  
 www.BLEWINC.com

**EXISTING CONDITIONS**  
 THESE DOCUMENTS ARE A RECORD OF EXISTING  
 CONDITIONS FOUND ON THE DATE INDICATED AND  
 AT THE SITE INDICATED

**Building 1**

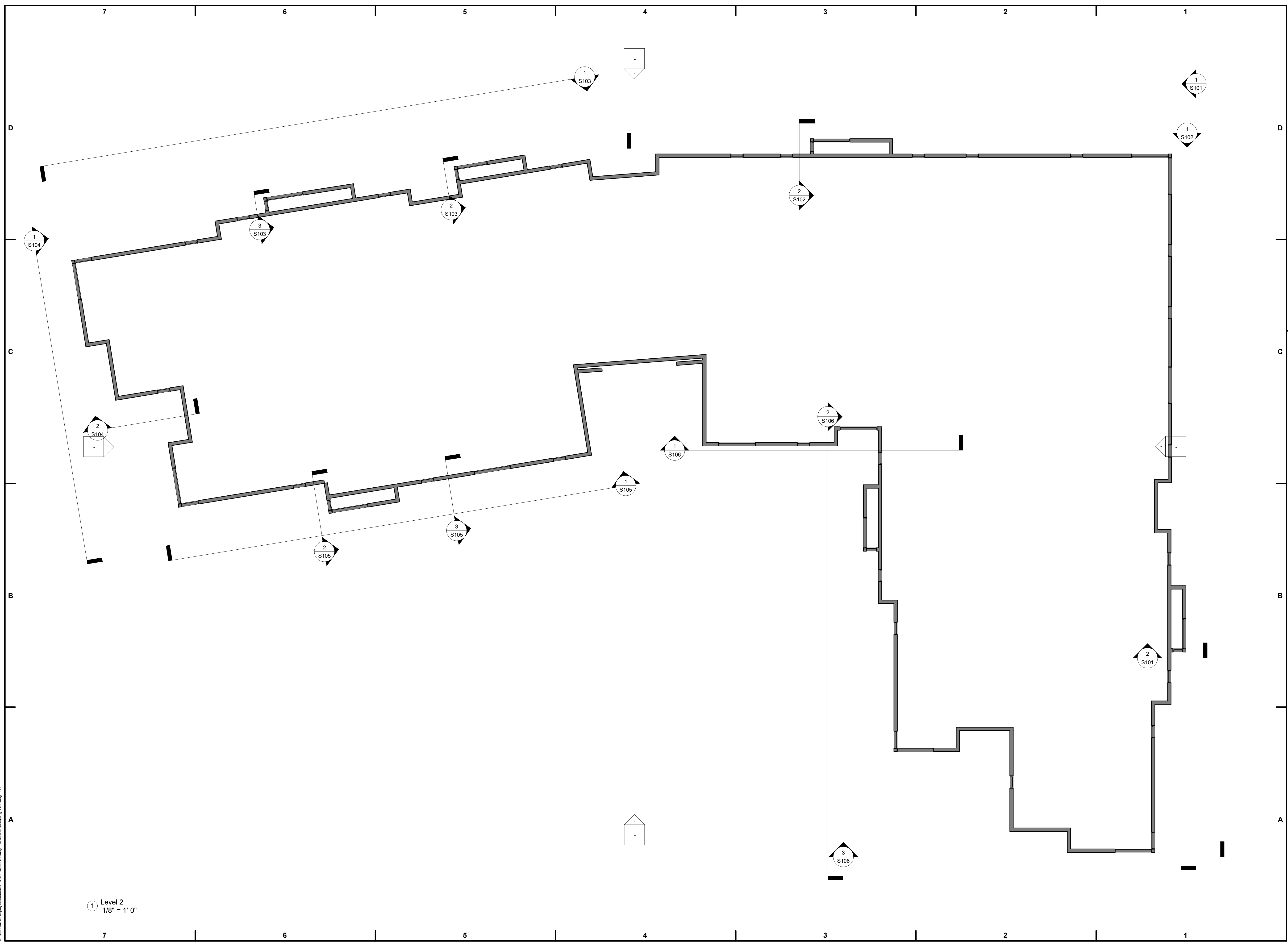
PROJECT #: 23-XXXX

ISSUE BLOCK	#	DATE	DESCRIPTION
	1	1/28/2023	Field Work Complete
	2	1/31/2023	Preliminary Submitted

SHEET TITLE:

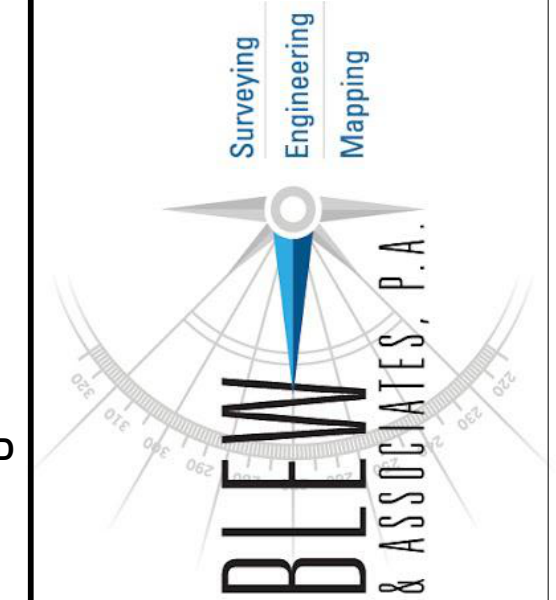
Level 2 - Floorplan

**L2**



① Level 2  
 1/8" = 1'-0"

L2 - Level 2 - Floorplan  
 1/31/2023 1:38:17 PM  
 C:\Users\blewin\OneDrive\Documents\2023\23-XXXX\Building 1\23-XXXX-Bldg 1 - L2.dwg



BLEW & ASSOCIATES, PA  
CIVIL ENGINEERS & LAND SURVEYORS  
OFFICE: 479.443.4506  
FAX: 479.582.1883  
3825 N. SHILOH DRIVE  
FAYETTEVILLE, ARKANSAS 72703  
www.BLEWINC.com

**EXISTING CONDITIONS**  
THESE DOCUMENTS ARE A RECORD OF EXISTING CONDITIONS FOUND ON THE DATE INDICATED AND AT THE SITE INDICATED

**Building 1**

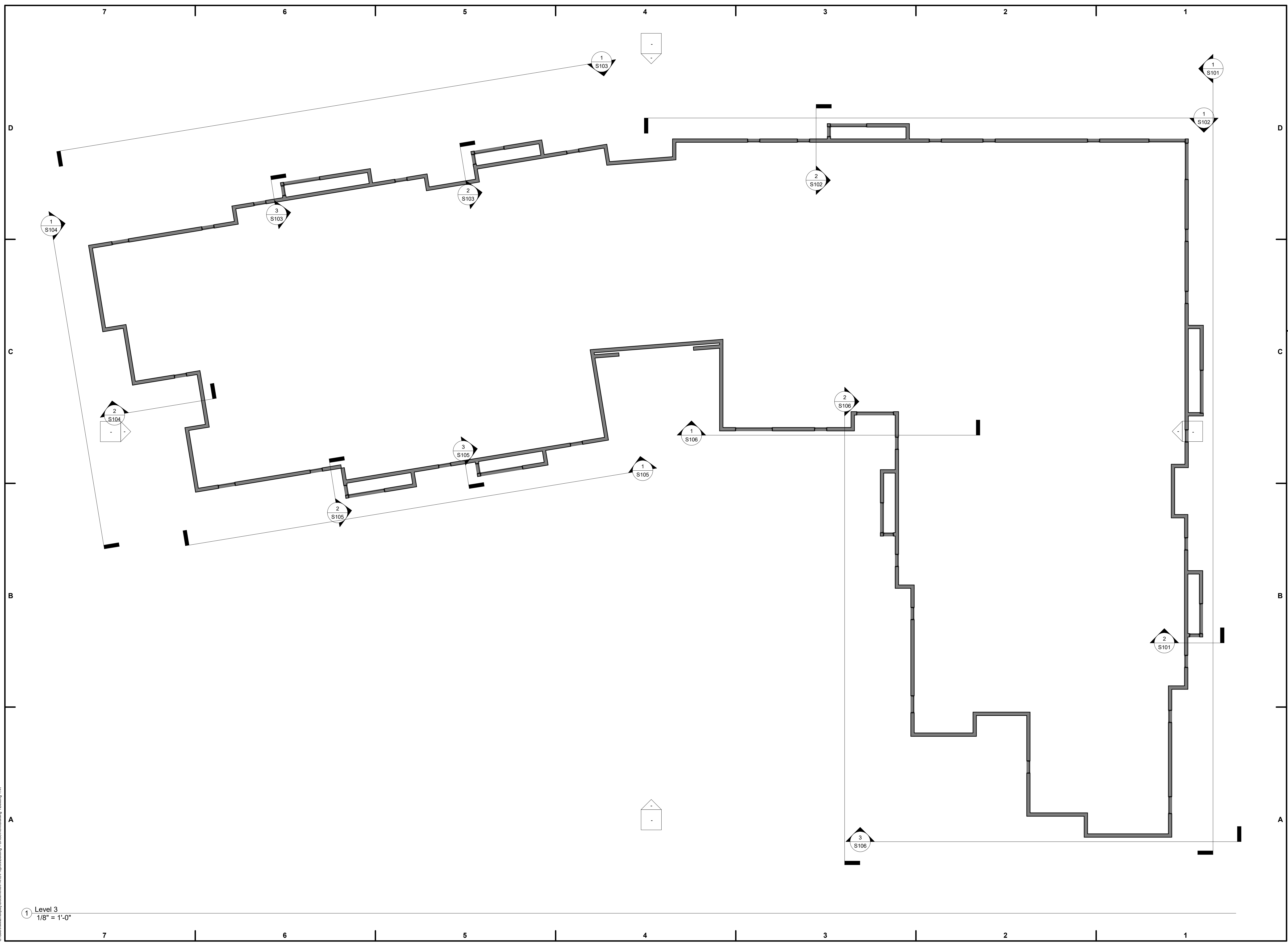
PROJECT #: 23-XXXX

#	DATE	DESCRIPTION
1	1/28/2023	Field Work Complete
2	1/31/2023	Preliminary Submitted

SHEET TITLE:

Level 3 - Floorplan

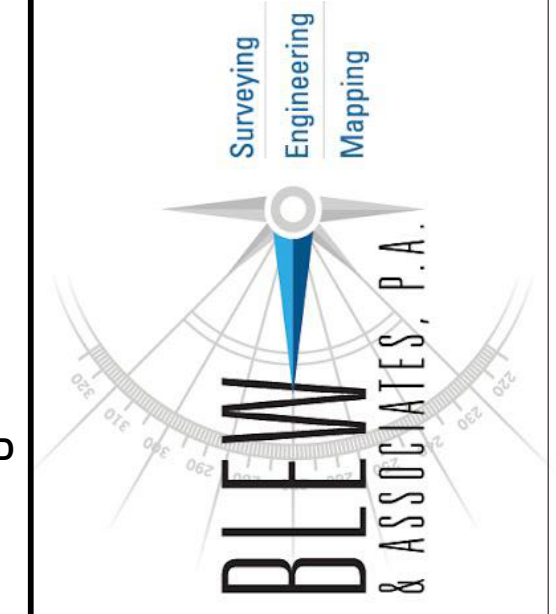
**L3**



① Level 3  
1/8" = 1'-0"

L3 - Level 3 - Floorplan  
1/31/2023 1:38:17 PM  
C:\Users\blewin\OneDrive\Documents\2023\23-XXXX\23-XXXX-Bldg 1 - Bldg 1.rvt





BLEW &  
ASSOCIATES, PA  
CIVIL ENGINEERS  
& LAND SURVEYORS  
OFFICE: 479.443.4506  
FAX: 479.582.1883  
3825 N. SHILOH DRIVE  
FAYETTEVILLE, ARKANSAS  
72703  
www.BLEWINC.com

**EXISTING CONDITIONS**  
THESE DOCUMENTS ARE A RECORD OF EXISTING  
CONDITIONS FOUND ON THE DATE INDICATED AND  
AT THE SITE INDICATED

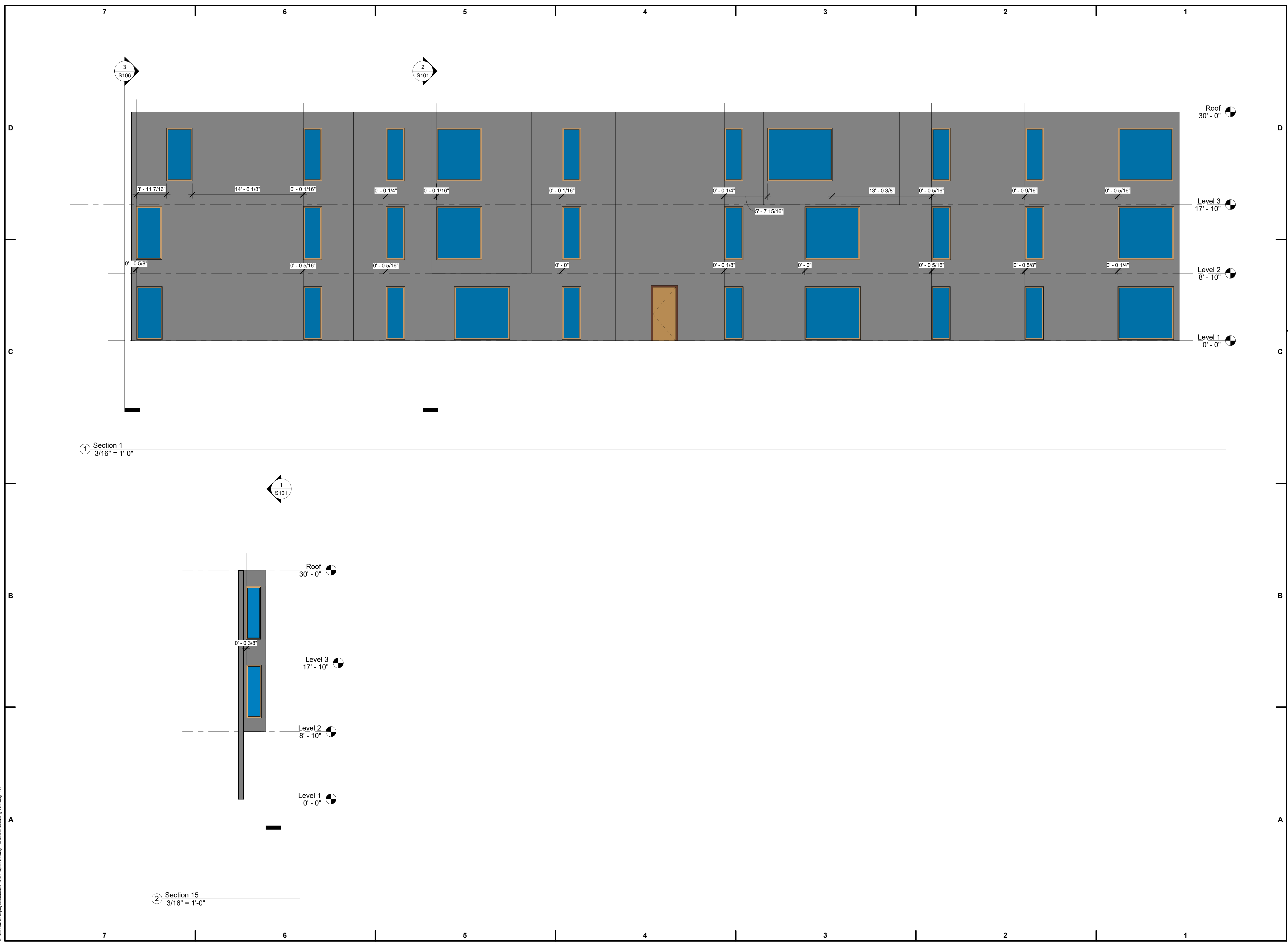
**Building 1**

PROJECT #:	23-XXXX	
ISSUE BLOCK		
#	DATE	DESCRIPTION
1	1/28/2023	Field Work Complete
2	1/31/2023	Preliminary Submitted

SHEET TITLE:

Sheet 1

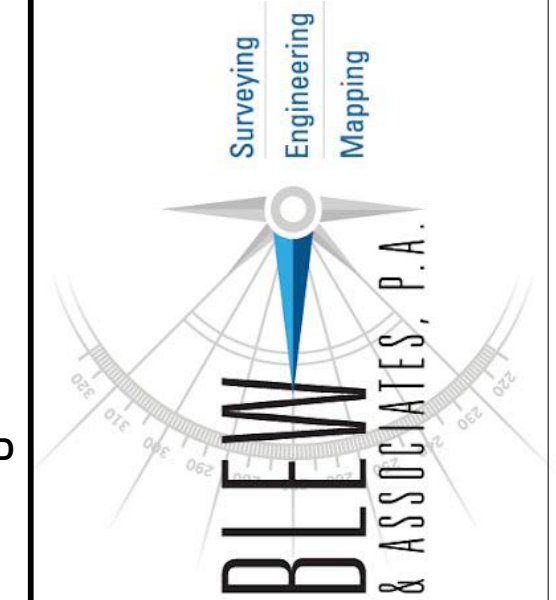
**S101**



① Section 1  
3/16" = 1'-0"

② Section 15  
3/16" = 1'-0"

S101 - Sheet 1  
 1/31/2023 1:38:18 PM  
 C:\Users\blewin\OneDrive\Documents\2023\Bldg 1\23-XXXX\Bldg 1\Bldg 1.rvt



BLEW & ASSOCIATES, P.A.  
 CIVIL ENGINEERS & LAND SURVEYORS  
 OFFICE: 479.443.4506  
 FAX: 479.582.1883  
 3825 N. SHILOH DRIVE  
 FAYETTEVILLE, ARKANSAS 72703  
 www.BLEWINC.com

**EXISTING CONDITIONS**  
 THESE DOCUMENTS ARE A RECORD OF EXISTING CONDITIONS FOUND ON THE DATE INDICATED AND AT THE SITE INDICATED

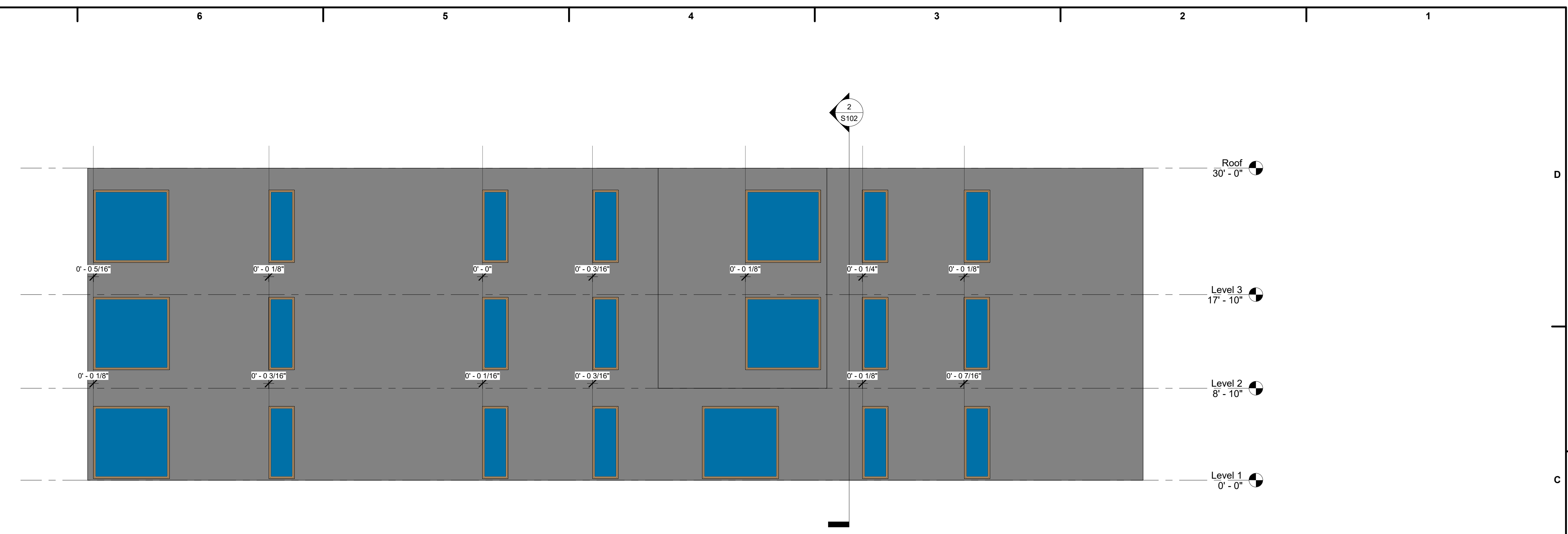
**Building 1**

PROJECT #:	23-XXXX	
ISSUE BLOCK		
#	DATE	DESCRIPTION
1	1/28/2023	Field Work Complete
2	1/31/2023	Preliminary Submitted

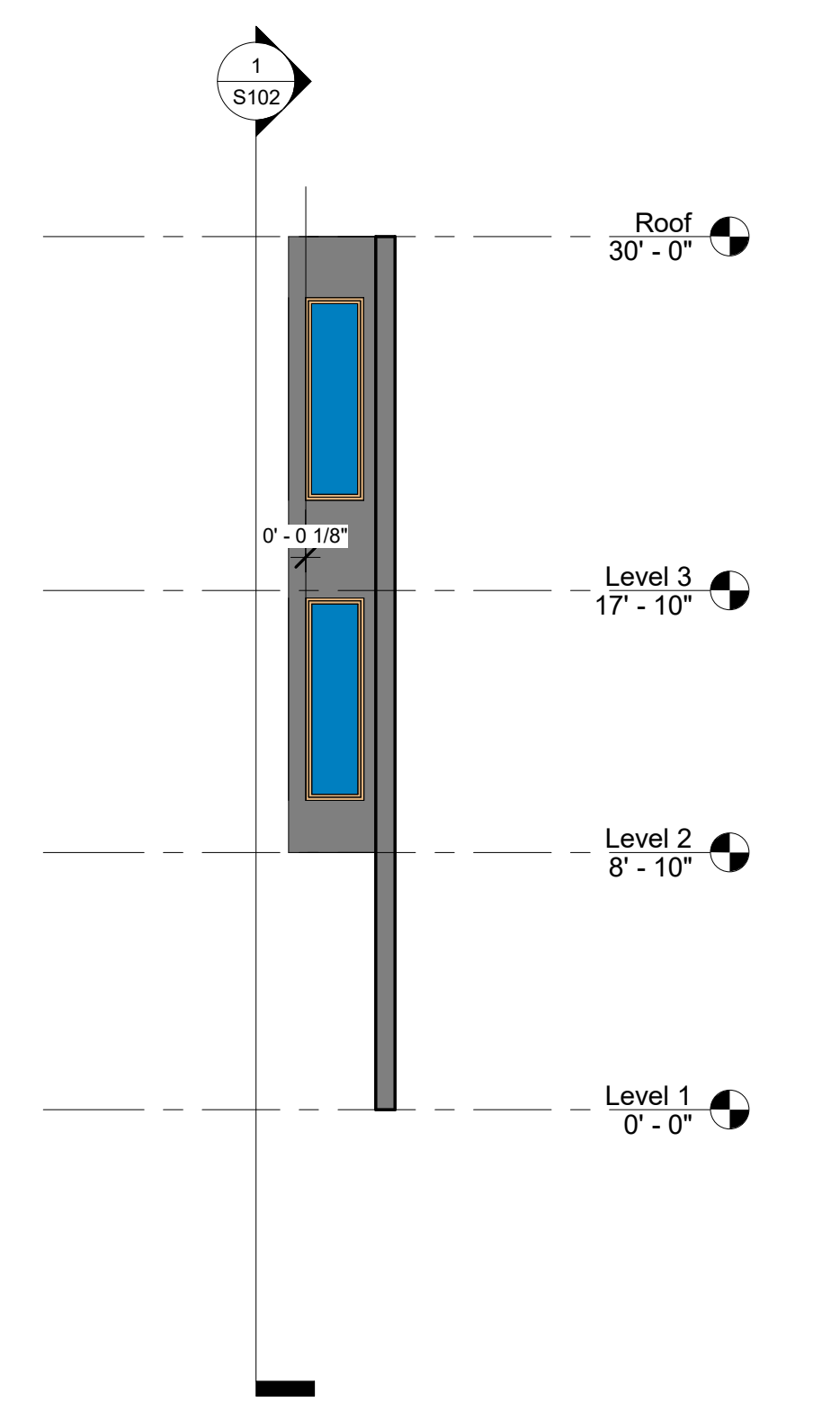
SHEET TITLE:

Sheet 2

**S102**

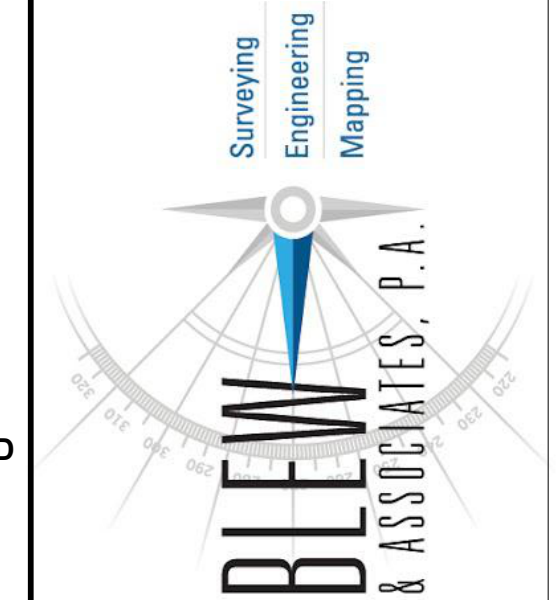


① N1  
 3/16" = 1'-0"



② Section 14  
 3/16" = 1'-0"

S102 - Sheet 2  
 1/31/2023 1:38:15 PM  
 C:\Users\blawson\Documents\2023\23-XXXX\23-XXXX-Bldg 1 - Bldg 1.dwg



BLEW & ASSOCIATES, PA  
 CIVIL ENGINEERS & LAND SURVEYORS  
 OFFICE: 479.443.4506  
 FAX: 479.582.1883  
 3825 N. SHILOH DRIVE  
 FAYETTEVILLE, ARKANSAS 72703  
 www.BLEWINC.com

**EXISTING CONDITIONS**  
 THESE DOCUMENTS ARE A RECORD OF EXISTING CONDITIONS FOUND ON THE DATE INDICATED AND AT THE SITE INDICATED

**Building 1**

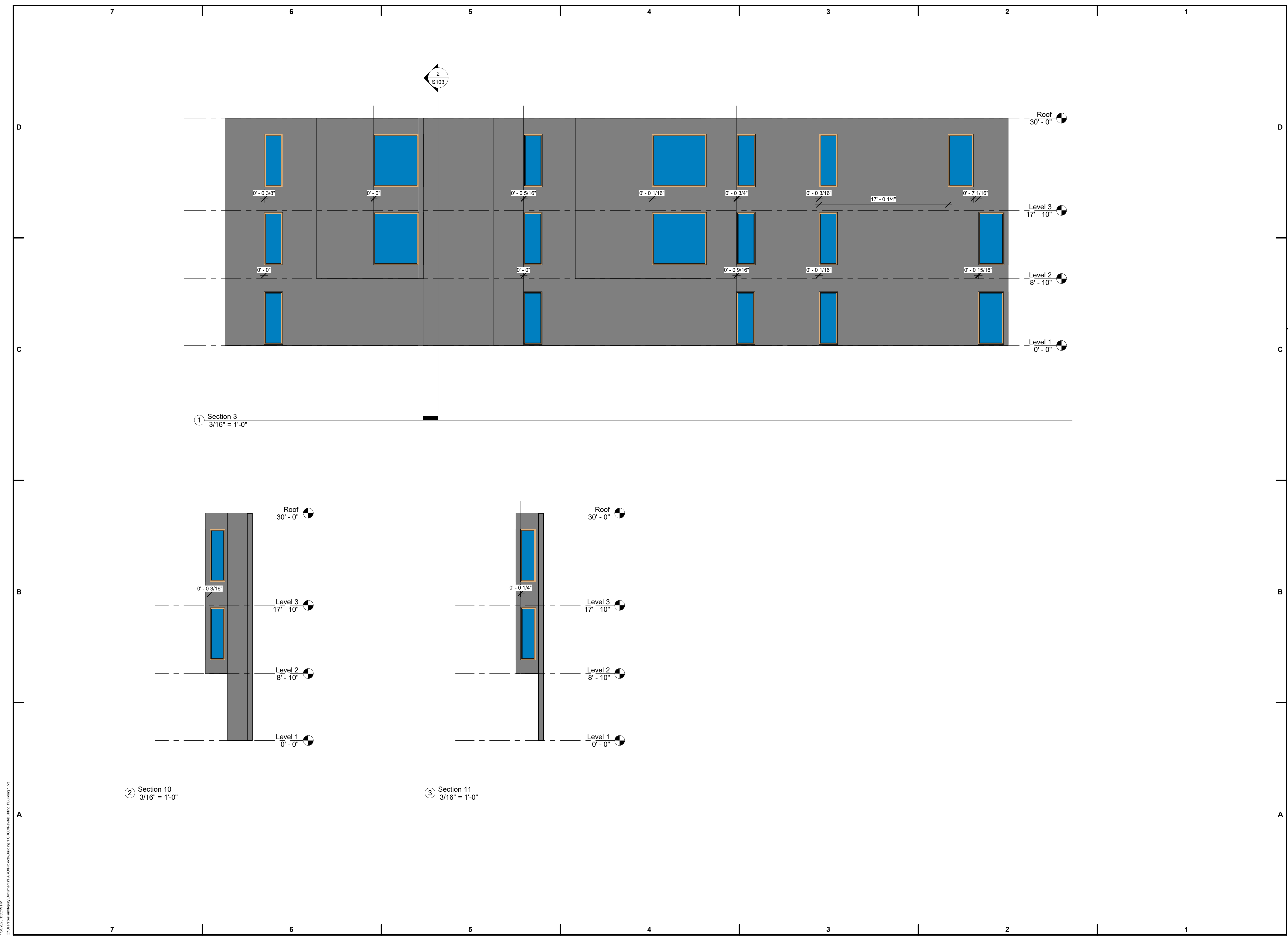
PROJECT #: 23-XXXX

#	DATE	DESCRIPTION
1	1/28/2023	Field Work Complete
2	1/31/2023	Preliminary Submitted

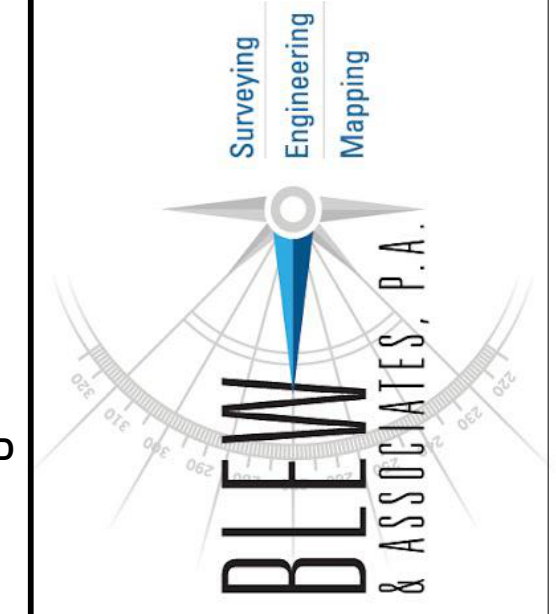
SHEET TITLE:

Sheet 3

**S103**



S103\_Sheet 3  
 1/31/2023 1:28:15 PM  
 C:\Users\blewin\OneDrive\Documents\2023\Engineering\23-XXXX\Building 1\23-XXXX-Bldg 1.dwg



BLEW &  
ASSOCIATES, PA  
CIVIL ENGINEERS  
& LAND SURVEYORS  
OFFICE: 479.443.4506  
FAX: 479.582.1883  
3825 N. SHILOH DRIVE  
FAYETTEVILLE, ARKANSAS  
72703  
www.BLEWINC.com

**EXISTING CONDITIONS**  
THESE DOCUMENTS ARE A RECORD OF EXISTING  
CONDITIONS FOUND ON THE DATE INDICATED AND  
AT THE SITE INDICATED

**Building 1**

PROJECT #:	23-XXXX	
ISSUE BLOCK		
#	DATE	DESCRIPTION
1	1/28/2023	Field Work Complete
2	1/31/2023	Preliminary Submitted

SHEET TITLE:

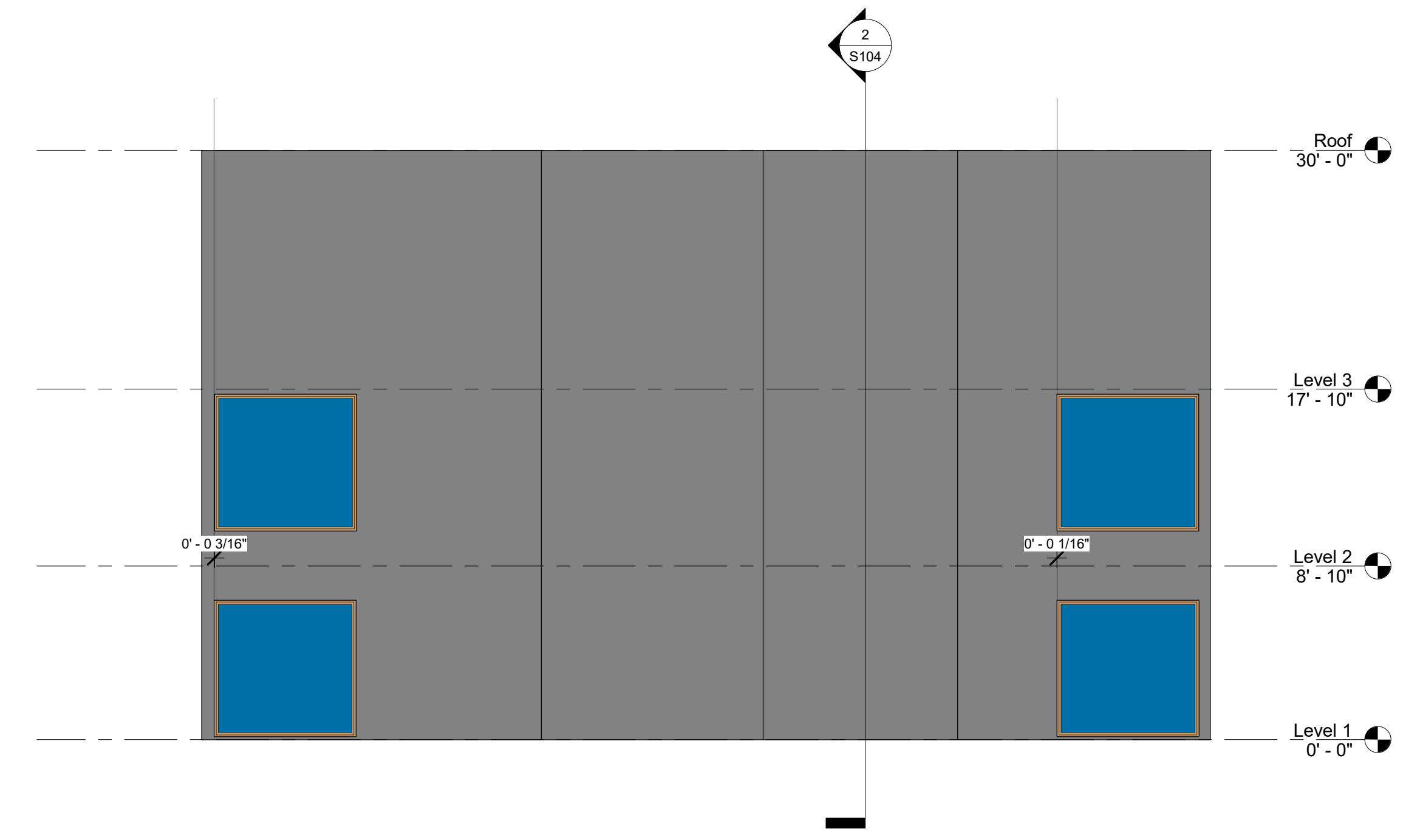
Sheet 4

**S104**

7 6 5 4 3 2 1

D

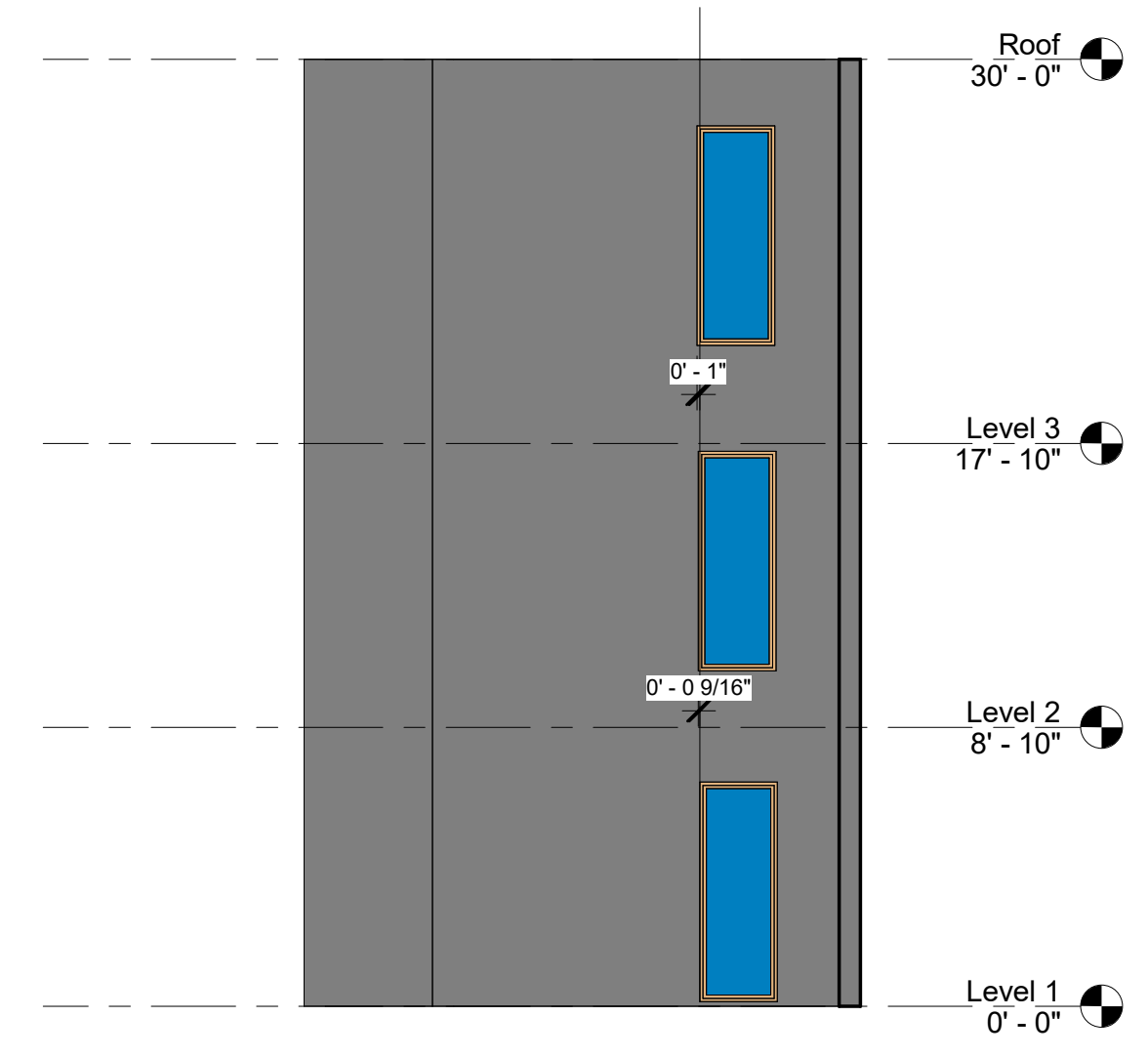
C



① Section 4  
3/16" = 1'-0"

B

A

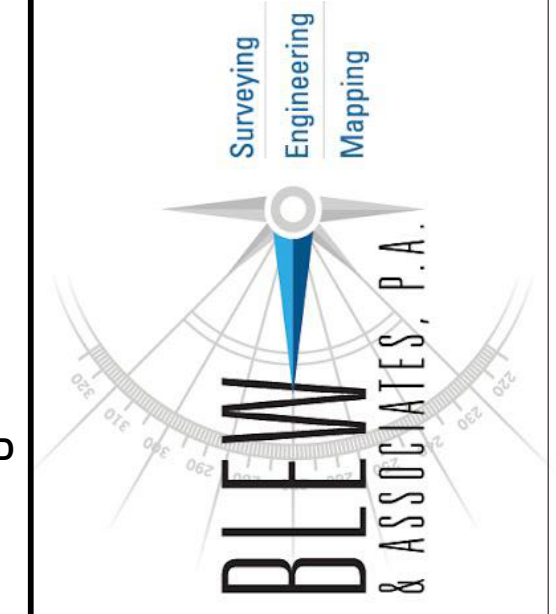


② Section 6  
3/16" = 1'-0"

7 6 5 4 3 2 1

S104\_Sheet 4  
 1/31/2023 1:38:22 PM  
 C:\Users\blewin\OneDrive\Documents\2023\Engineering\2023\23-XXXX\Building 1\23-XXXX-Bldg 1.dwg





BLEW &  
ASSOCIATES, PA  
CIVIL ENGINEERS  
& LAND SURVEYORS  
OFFICE: 479.443.4506  
FAX: 479.582.1883  
3825 N. SHILOH DRIVE  
FAYETTEVILLE, ARKANSAS  
72703  
www.BLEWINC.com

**EXISTING CONDITIONS**  
THESE DOCUMENTS ARE A RECORD OF EXISTING  
CONDITIONS FOUND ON THE DATE INDICATED AND  
AT THE SITE INDICATED

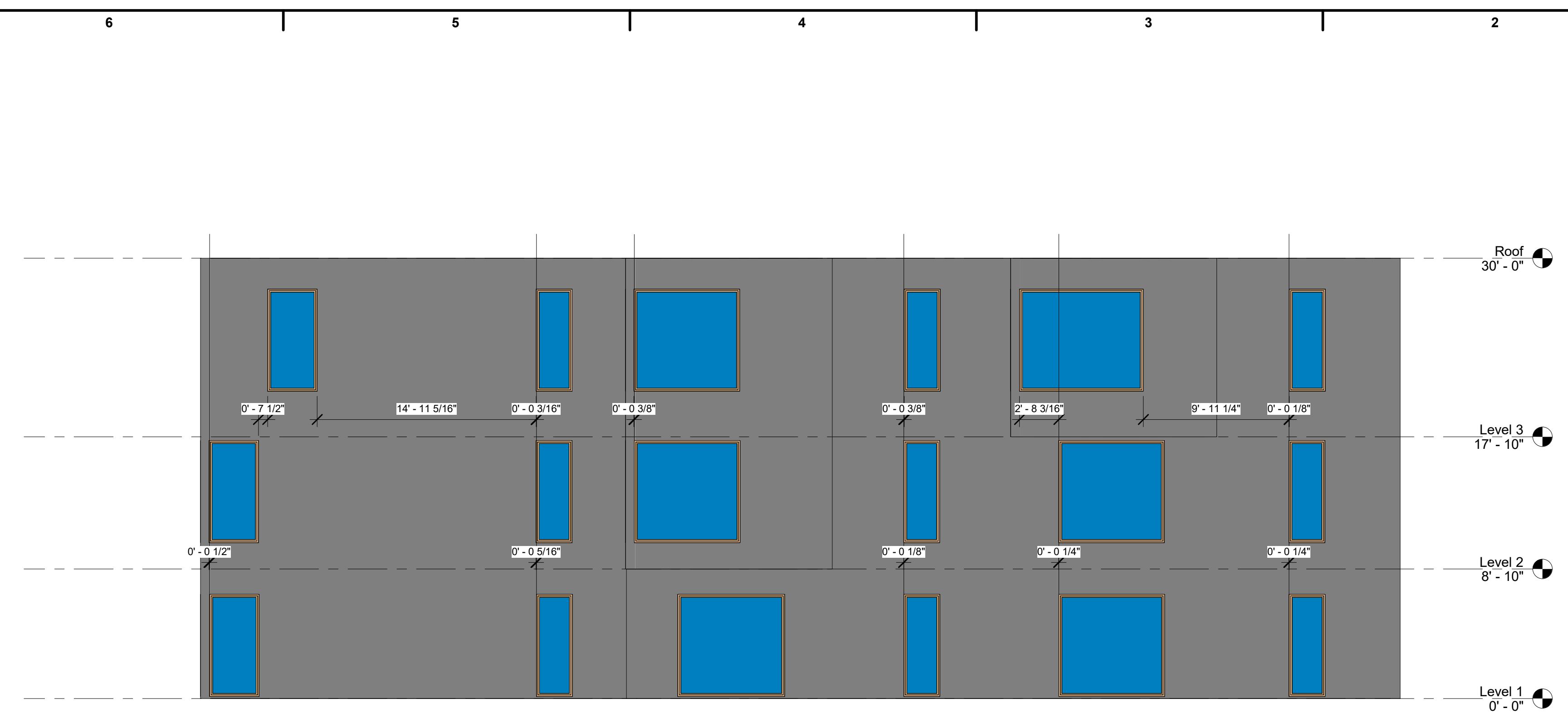
**Building 1**

PROJECT #:	23-XXXX	
ISSUE BLOCK		
#	DATE	DESCRIPTION
1	1/28/2023	Field Work Complete
2	1/31/2023	Preliminary Submitted

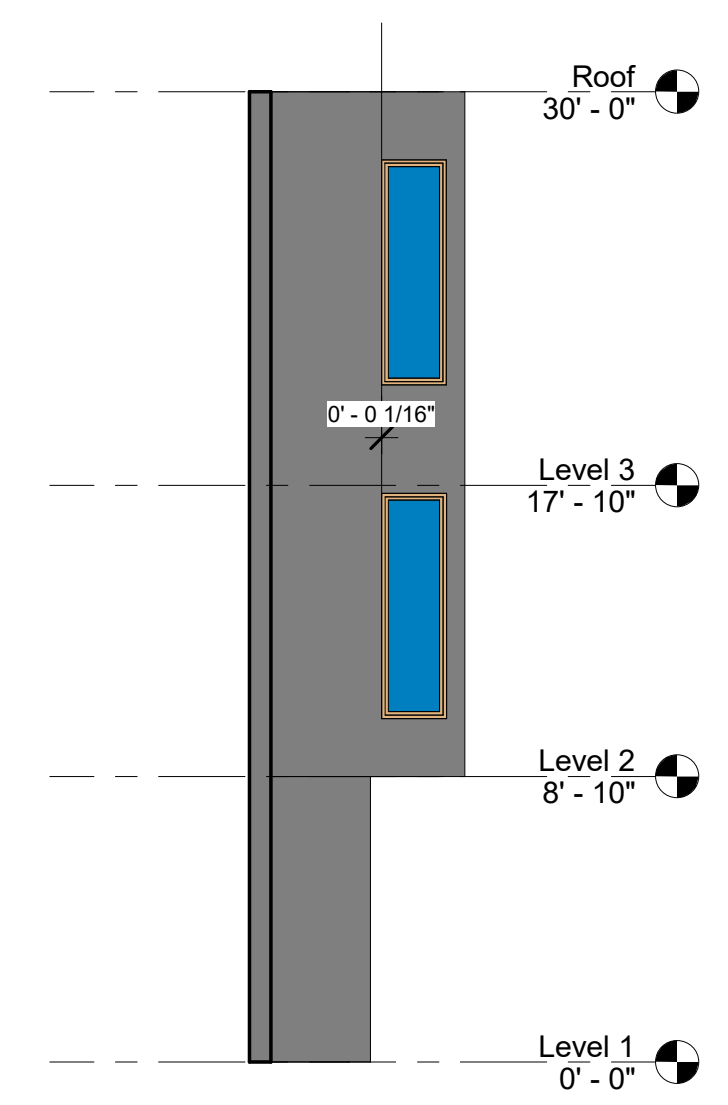
SHEET TITLE:

Sheet 5

**S105**

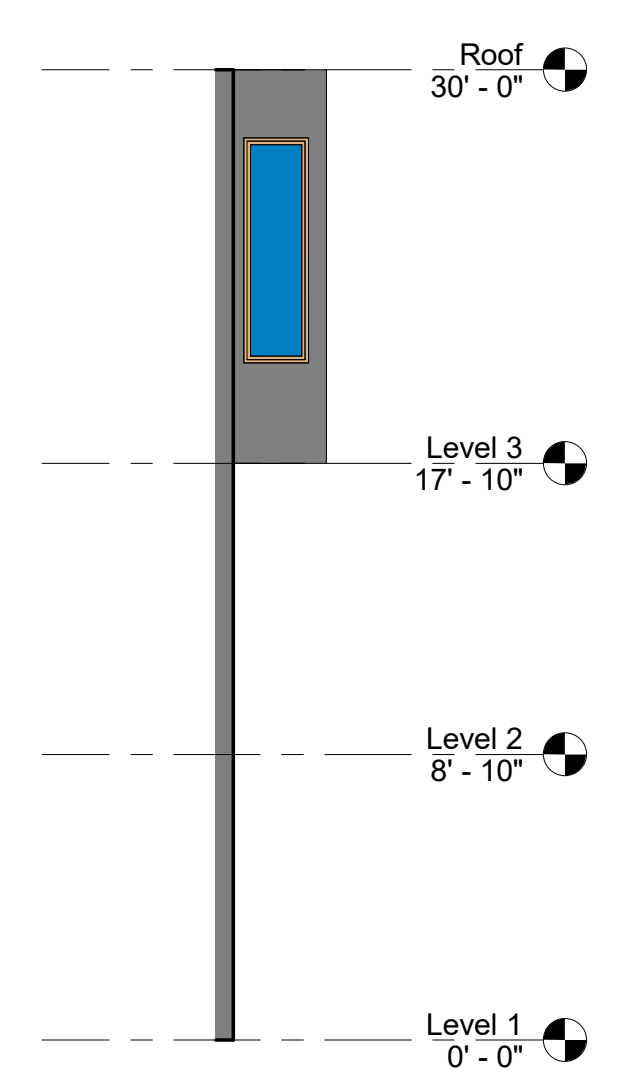


① Section 5  
3/16" = 1'-0"

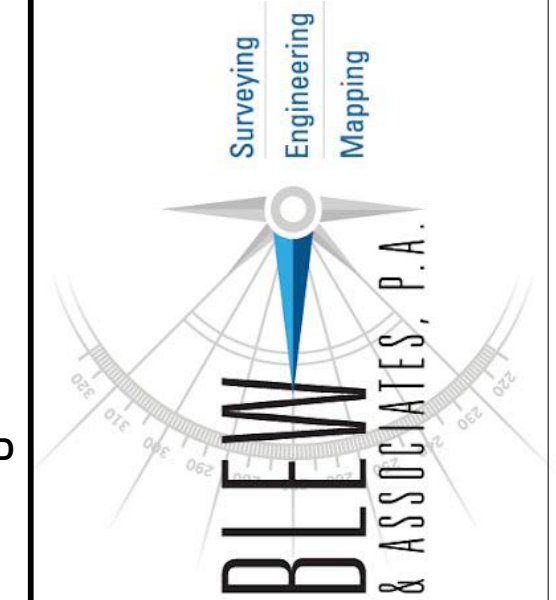


② Section 12  
3/16" = 1'-0"

③ Section 13  
3/16" = 1'-0"



S105\_Sheet 5  
 1/31/2023 1:38:21 PM  
 C:\Users\blewin\OneDrive\Documents\2023\Engineering\Building 1\230223\Building 1.dwg



**BLEW & ASSOCIATES, PA**  
 CIVIL ENGINEERS  
 & LAND SURVEYORS  
 OFFICE: 479.443.4506  
 FAX: 479.582.1883  
 3825 N. SHILOH DRIVE  
 FAYETTEVILLE, ARKANSAS  
 72703  
 www.BLEWINC.com

**EXISTING CONDITIONS**  
 THESE DOCUMENTS ARE A RECORD OF EXISTING  
 CONDITIONS FOUND ON THE DATE INDICATED AND  
 AT THE SITE INDICATED

**Building 1**

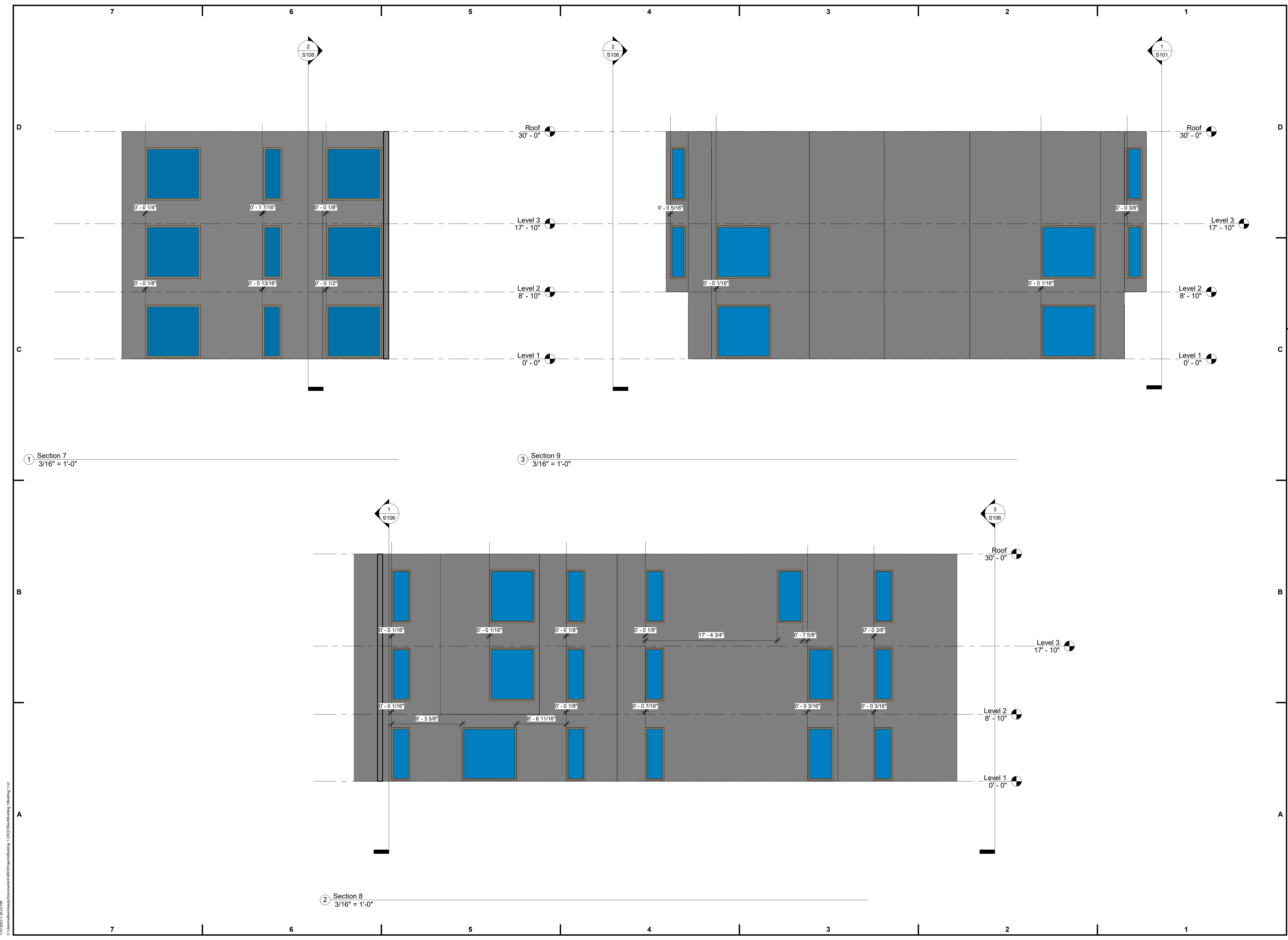
PROJECT #: 23-XXXX

#	DATE	DESCRIPTION
1	1/28/2023	Field Work Complete
2	1/31/2023	Preliminary Submitted

SHEET TITLE:

Sheet 6

**S106**



1 Section 7  
 3/16" = 1'-0"

3 Section 9  
 3/16" = 1'-0"

2 Section 8  
 3/16" = 1'-0"

3 Section 10  
 3/16" = 1'-0"

S106\_Sheet 6  
 1/31/2023 1:38:22 PM  
 C:\Users\blm\OneDrive\Documents\2023\Engineering\Building 1\23-XXXX\Building 1.dwg